

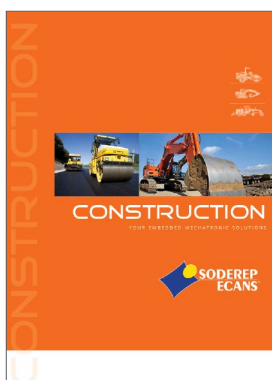


CONSTRUCTION

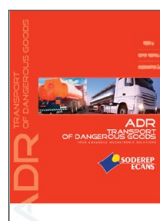
YOUR EMBEDDED MECHATRONIC SOLUTIONS



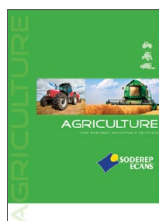
OUR CATALOGS



CONSTRUCTION



ADR
TRANSPORT OF
DANGEROUS GOODS



AGRICULTURE



GOODS
TRANSPORT



LIFTING
& HANDLING EQUIPMENT



MARINE



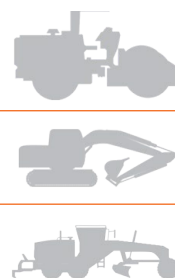
PASSENGERS
TRANSPORT



QUARRYING
& MINING



SPECIAL VEHICLES &
MACHINERY






CONTENTS

BATTERY MASTER SWITCH ELECTRICAL CONTROL	3
BATTERY MASTER SWITCH MANUAL CONTROL	13
POWER RELAY	27
SWITCH AND BUTTON	29
SPARE PARTS	33

CONSTRUCTION



BATTERY MASTER SWITCH ELECTRICAL CONTROL

BISTABLE		
SINGLE POLE		
 200 A	S220	4
 300 A	S250	5
 300 A	S260	7

S220 SERIES



GLOBAL PRODUCT



203105

GENERAL CHARACTERISTICS

IP67 IPX9K	+85°C -40°C	PBT glass filled	700 g	M8
---------------	----------------	---------------------	-------	----

- Continuous rating 200 A
- Overload 800 A (10 s)
- Temporization 15 s (wiring option)

VERSIONS

GROUND CUT-OFF or POSITIVE CUT-OFF
12 V or 24 V

PRODUCT SELECTION

P/N	RATED VOLTAGE	POLARITY	TERMINALS		AUXILIARY CIRCUIT	
			LENGTH	MATERIAL	TYPE	CONTINUOUS RATING
203105	24 V	+ CUT-OFF	6 mm	Silver plated copper	LED control	12 W (0,5 A)
203106	12 V	+ CUT-OFF	6 mm	Silver plated copper	LED control	12 W (1 A)
203254	24 V	GND CUT-OFF	6 mm	Silver plated copper	LED control	12 W (0,5 A)
203255	12 V	GND CUT-OFF	6 mm	Silver plated copper	LED control	12 W (1 A)

On request: specific technical demand can be studied

CONTROL SWITCH (see «Switch and button» section)



ON-OFF SWITCH
S701 SERIES
2-Pin ISO 15170 / DIN 72585 **250254**

To use with:
All the S220 SERIES

ACCESSORIES (see «Spare parts» section)

CABLING KIT
713 SERIES **250025**
4-Pin Superseal connector & wire

BUSBAR
900 SERIES **203213**
3 M8 terminals (washers & nuts included)

300 A

BATTERY MASTER SWITCH - ELECTRICAL CONTROL

BISTABLE - SINGLE POLE

S250 SERIES



GLOBAL PRODUCT

BATTERY SWITCH
ELECTRICAL CONTROL

BATTERY SWITCH
MANUAL CONTROL

POWER RELAY

SWITCH AND BUTTON

ACCESSORIES AND
SPARE PARTS



202319

GENERAL CHARACTERISTICS

IP65

+85°C
-40°C

PBT
Reinforced

1000 g

M10

Continuous rating 300 A

Overload 1500 A (15 s)

VERSIONS

MASTER or SLAVE

GROUND CUT-OFF or POSITIVE CUT-OFF

12 V or 24 V

OPTIONS

Auxiliary circuit

Temporization

Low Voltage Monitoring (LVM)



202976

CONTROL SWITCHES (see «Switch and button» section)

PUSH BUTTON SWITCH

S700 SERIES **202170**
2-Pin ISO 15170 / DIN 72585

To use with:

See product selection table



ON-OFF SWITCH

S701 SERIES **250254**
2-Pin ISO 15170 / DIN 72585

To use with:

See product selection table



S250 SERIES

PRODUCT SELECTION

MASTER									
P/N	VOLT	TERMINALS		POLARITY	AUXILIARY CIRCUIT	LVM	TEMPORIZATION	CONTROL TYPE	CONNECTION
		LENGTH	MATERIAL						
202301	12 V	13 mm	Copper	+ CUT-OFF	-	-	-	2 push buttons	3 wires
202310	24 V	10 mm	Silver plated copper	+ CUT-OFF	Relay D+	-	-	ON-OFF	4 wires
202311	12 V	10 mm	Silver plated copper	+ CUT-OFF	Relay D+	-	-	ON-OFF	4 wires
202316	24 V	10 mm	Silver plated copper	+ CUT-OFF	Relay D+	-	-	2 push buttons	4 wires
202317	12 V	10 mm	Silver plated copper	+ CUT-OFF	Relay D+	-	-	2 push buttons	4 wires
202319	24 V	10 mm	Silver plated copper	+ CUT-OFF	D+	-	-	ON-OFF	4-Pin, DIN connector
202595	12 V	10 mm	Silver plated copper	+ CUT-OFF	Relay control output for D+	60 sec	-	Monostable	7-Pin, DIN connector
202597	24 V	10 mm	Silver plated copper	+ CUT-OFF	Relay control output for D+	60 sec	-	Monostable	7-Pin, DIN connector
202636	12 V	10 mm	Silver plated copper	+ CUT-OFF	D+	-	-	ON-OFF	4-Pin, DIN connector
202637	12 V	10 mm	Silver plated copper	+ CUT-OFF	Relay control output for D+	5 min	-	Monostable	7-Pin, DIN connector
202639	24 V	10 mm	Silver plated copper	+ CUT-OFF	Relay control output for D+	5 min	-	Monostable	7-Pin, DIN connector
202698	12 V	10 mm	Silver plated copper	+ CUT-OFF	D+	-	30 s	ON-OFF	4 wires
202800	24 V	10 mm	Silver plated copper	GND CUT-OFF	Relay control output 200 mA	-	30 s	ON-OFF	5-Pin, Superseal connector
202976	12 V	10 mm	Silver plated copper	GND CUT-OFF	-	-	30 s	ON-OFF	2-Pin, Superseal connector
203035	24 V	10 mm	Silver plated copper	+ CUT-OFF	-	-	5 min	ON-OFF	2-Pin, Superseal connector

SLAVE									
P/N	VOLT	TERMINALS		POLARITY	AUXILIARY CIRCUIT	LVM	TEMPORIZATION	CONTROL TYPE	CONNECTION
		LENGTH	MATERIAL						
202664	12 V	10 mm	Silver plated copper	GND CUT-OFF	-	-	-	ON-OFF	2 wires
202665	24 V	10 mm	Silver plated copper	GND CUT-OFF	-	-	-	ON-OFF	2 wires

On request: specific technical demand can be studied

ACCESSORIES (see « Spare parts» section)

CABLING KIT

713 SERIES 2-Pin Superseal connector & wire	250351
713 SERIES 5-Pin Superseal connector & wire	250350
713 SERIES 4-Pin DIN connector	250333
713 SERIES 7-Pin DIN connector	250352

TERMINAL INSULATION CAP

900 SERIES Red	201010
900 SERIES Black	202499
TERMINAL HEIGHTENED 900 SERIES	200588

300 A

BATTERY MASTER SWITCH - ELECTRICAL CONTROL

BISTABLE - SINGLE POLE

S260 SERIES



GLOBAL PRODUCT



202710

GENERAL CHARACTERISTICS

IP67 IPX9K	+85°C -40°C	PBT glass filled	850 g	M10
----------------------	----------------	----------------------------	--------------	------------

- Continuous rating 300 A
- Overload 1500 A (15 s)
- Temporization 2.5 s
- Positive Cut-off

VERSIONS

12 V or 24 V

PRODUCT SELECTION

P/N	VOLT	TERMINALS		AUXILIARY CIRCUIT		TEMPORIZATION	CONNECTION	CONTROL TYPE
		LENGTH	MATERIAL	TYPE	CONTINUOUS RATING			
202710	24 V	12 mm	Silver plated copper	D +	300 mA	2.5 s	7-Pin DIN type connector	ON-OFF
202712	12 V	12 mm	Silver plated copper	D+	300 mA	2.5 s	7-Pin DIN type connector	ON-OFF

On request: specific technical demand can be studied

CONTROL SWITCH (see «Switch and button» section)



ON-OFF SWITCH
S701 SERIES **202556**
4-Pin ISO 15170 / DIN 72585

To use with:
All the S260 SERIES

ACCESSORIES (see «Spare parts» section)

CABLING KIT
713 SERIES **250352**
7-Pin DIN connector with 3m length cable

TERMINAL INSULATION CAP
900 SERIES **201010**
Red
900 SERIES **202499**
Black

TERMINAL HEIGHTENED
900 SERIES **200588**

BATTERY SWITCH
ELECTRICAL CONTROL

BATTERY SWITCH
MANUAL CONTROL

POWER RELAY

SWITCH AND BUTTON

ACCESSORIES AND
SPARE PARTS

CONSTRUCTION EQUIPMENT FINANCING SOLUTIONS



BATTERY MASTER SWITCH ELECTRICAL CONTROL

MONOSTABLE

SINGLE POLE



S200

10

S200 SERIES



GLOBAL PRODUCT



202136

GENERAL CHARACTERISTICS

IP65	+80°C -40°C	Zinc alloy	UNTIL 1400 g	M10 M12
------	----------------	------------	--------------	------------

- Continuous rating 250 A
- Overload 1800 A (60 s)
- Ground or positive Cut-off

VERSIONS

12 V or 24 V

OPTIONS

- Fixation adapter
- Protection diode
- Electrical load switching



200735



200358

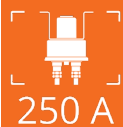
CONTROL SWITCHES (see «Switch and button» section)

ON-OFF SWITCH

S701 SERIES **250254**
2-Pin ISO 15170 / DIN 72585

To use with:
All the S200 SERIES





BATTERY MASTER SWITCH - ELECTRICAL CONTROL

MONOSTABLE - SINGLE POLE

S200 SERIES

PRODUCT SELECTION

P/N	VOLT	FINISH	WEIGHT	TERMINALS				AUXILIARY CIRCUIT			OTHER
				SIZE	LENGTH	MATERIAL	SPACER ON TERMINALS	TYPE	CONNECTION	ACCESSORIES	
200358	12 V	Black	1260 g	M10	8 mm	Copper	No	-	-	-	«U» shape bracket
200359	24 V	Black	1260 g	M10	8 mm	Copper	No	-	-	-	«U» shape bracket
200439	24 V	Metallic	960 g	M10	7 mm	Copper	Yes	Normally open	2 x M5	-	-
200686	12 V	Metallic	960 g	M10	7 mm	Copper	No	-	-	-	-
200735	12 V	Metallic	960 g	M10	7 mm	Copper	No	D+	2 x M5	Shunt	-
200819	24 V	Metallic	1400 g	M10 + M12	7 mm	Copper	No	-	-	-	«U» shape bracket + blade adapter plate
200820	24 V	Metallic	960 g	M10	7 mm	Copper	No	-	-	-	-
200822	12 V	Metallic	1400 g	M10 + M12	7 mm	Copper	No	-	-	-	«U» shape bracket + blade adapter plate
200824	24 V	Metallic	1400 g	M10 + M12	7 mm	Copper	No	D+	2 x M5	Shunt	«U» shape bracket + blade adapter plate
201217	24 V	Metallic	1260 g	M10	14 mm	Copper	Yes	-	-	-	«U» shape bracket
201245	24 V	Metallic	960 g	M10	7 mm	Copper	Yes	D+	2 x M5	Shunt	-
201766	24 V	Metallic	960 g	M10	22 mm	Copper	No	-	-	-	-
201926	24 V	Metallic	960 g	M10	14 mm	Copper	Yes	-	-	-	-
202072	24 V	Metallic	960 g	M10	7 mm	Copper	Yes	D+	2 x M5	Shunt	Protection diode
202136	12 V	Metallic	960 g	M10	7 mm	Copper	Yes	D+	2 x M5	Shunt	Protection diode
202159	24 V	Metallic	960 g	M10	22 mm	Copper	No	-	-	-	Protection diode

On request: specific technical demand can be studied

ACCESSORIES (see «Spare parts» section)

TERMINAL HEIGHTENED

900 SERIES **200588**

TERMINAL INSULATION CAP

900 SERIES Red **201010**

900 SERIES Black **202499**



Z
O
T
D
T
U
Z
O
U

BATTERY MASTER SWITCH MANUAL CONTROL

DOUBLE POLE



S190

14

S190 SERIES



GLOBAL PRODUCT



200019

GENERAL CHARACTERISTICS

IP65

+85 °C
-40 °C

Zinc alloy

until 1200g

M10

Continuous rating until 300 A

Overload 2500 A (5 s)

Ground or positive Cut-off

OPTIONS

Auxiliary circuit

PRODUCT SELECTION

P/N	CONTINUOUS RATING	WEIGHT	FINISH	HANDLE		TERMINALS			AUXILIARY CIRCUIT			
				TYPE	COLOR AND MATERIAL	LENGTH	MATERIAL	SPACER OF TERMINALS	TYPE	ACCESORIES	CONTINUOUS RATING	CONNECTION
200014	250 A	1100 g	Metallic	Fixed / 2 positions	Red thermoplastic	6 mm	Copper	Yes	D+	Shunt	10 A	1 x M6
200015	250 A	1100 g	Metallic	Fixed / 2 positions	Red thermoplastic	12 mm	Copper	No	-	-	-	-
200018	250 A	1100 g	Metallic	Fixed / 2 positions	Red thermoplastic	6 mm	Copper	Yes	Normally open	Shunt	10 A	1 x M6
200019	250 A	1100 g	Metallic	Fixed / 2 positions	Red thermoplastic	6 mm	Copper	Yes	Normally open	-	10 A	2 x M6
200034	250 A	1100 g	Metallic	Fixed / 2 positions	Red thermoplastic	15 mm	Copper	No	-	-	-	-
200232	250 A	1200 g	Metallic	Fixed / 2 positions	Red thermoplastic	6 mm	Copper	Yes	-	-	-	-
200913	250 A	1110 g	Metallic	«L» shape, removable in ON and OFF positions	Red thermoplastic	12 mm	Copper	No	-	-	-	-
201148	250 A	1150 g	Metallic	High, removable in ON and OFF positions	Red thermoplastic	6 mm	Copper	Yes	-	-	-	-
201544	250 A	1100 g	Metallic	Removable in ON and OFF positions	Red thermoplastic	12 mm	Copper	No	-	-	-	-
202496	250 A	1100 g	Black	Fixed / 2 positions Lockable in OFF position	Red thermoplastic	12 mm	Copper	Yes	Normally open	-	10 A	2 x M6
203098	300 A	1100 g	Metallic	Fixed / 2 positions	Red thermoplastic	12 mm	Tin-plated copper	No	-	-	-	-
203167	250 A	1100 g	Yellow	Fixed / 2 positions Lockable in OFF position	Red thermoplastic	12 mm	Copper	Yes	Normally open	-	10 A	2 x M6

On request: specific technical demand can be studied



BATTERY MASTER SWITCH - MANUAL CONTROL

DOUBLE POLE

S190 SERIES

ACCESSORIES (see «Spare parts» section)

HANDLE		TERMINAL INSULATION CAP	
901 SERIES For P/N 200913	200392	900 SERIES Red	201010
901 SERIES For P/N 201148	200929	900 SERIES Black	202499
901 SERIES For P/N 201544	201134	TERMINAL HEIGHTENED	
		900 SERIES	200588

BATTERY SWITCH
ELECTRICAL CONTROL

BATTERY SWITCH
MANUAL CONTROL

POWER RELAY

SWITCH AND BUTTON

ACCESSORIES AND
SPARE PARTS

CONSTRUCTION



BATTERY MASTER SWITCH MANUAL CONTROL

SINGLE POLE

 S9	18
 S10	19
 S20	20
 S30	22
 S50	23
 S100	24

BATTERY MASTER SWITCH - MANUAL CONTROL
SINGLE POLE

S9 SERIES



GLOBAL PRODUCT



202373

GENERAL CHARACTERISTICS

IP43	+80 °C -40 °C	Anodized Aluminium	200 g	M10
------	------------------	--------------------	-------	-----

Continuous rating 100 A

Overload 500 A (10 s)

Ground or positive Cut-off

PRODUCT SELECTION

P/N	HANDLE		TERMINALS	
	TYPE	COLOR AND MATERIAL	LENGTH	MATERIAL
202373	Key removable in ON and OFF position	Red thermoplastic and steel key	10 mm	Copper

On request: specific technical demand can be studied

ACCESSORIES (see «Spare parts» section)

TERMINAL INSULATION CAP	
900 SERIES Red	201010
900 SERIES Black	202499
TERMINAL HEIGHTENED	
900 SERIES	200588

PROTECTION CAPS	
900 SERIES	201898

S10 SERIES



GLOBAL PRODUCT



GENERAL CHARACTERISTICS

IP67 IP41	+80 °C -40 °C	PPO glass filled	150 g	M10
--------------	------------------	---------------------	-------	-----

Continuous rating 100 A

Overload 500 A (10 s)

Ground or positive Cut-off

VERSIONS

IP67 or IP41

OPTIONS

Homologation

PRODUCT SELECTION

P/N	PROTECTION DEGREE	HOMOLOGATION	TERMINALS MATERIAL	TYPE OF HANDLE	ACCESSORIES
201767	IP67	ISO 8846 / ISO 10133	Copper	Removable in OFF position	-
201768	IP67	ISO 8846 / ISO 10133	Copper	Removable in OFF position	Chain
201831	IP67	ISO 8846 / ISO 10133	Tin-plated copper	Removable in OFF position	Tin-plated nuts
202365	IP41	-	Copper	Removable in OFF position	-
203201	IP67	ISO 8846 / ISO 10133	Copper	Removable in OFF position	Chain and protection cap

On request: specific technical demand can be studied

ACCESSORIES (see «Spare parts» section)

CHAIN

900 SERIES **200894**

RUBBER PROTECTION

900 SERIES **203243**

HANDLE

901 SERIES **202474**
For P/N 201767 - 201768 - 201831 - 202365 - 203201

TERMINAL INSULATION CAP

900 SERIES **201010**
Red

900 SERIES **202499**
Black

TERMINAL HEIGHTENED

900 SERIES **200588**

S20 SERIES



GLOBAL PRODUCT



GENERAL CHARACTERISTICS



Continuous rating 150 A

Overload 1000 A (5 s)

VERSIONS

GROUND or POSITIVE CUT-OFF, GROUND CUT-OFF, POSITIVE CUT-OFF

IP54 until IP67

FIXED or REMOVABLE HANDLE

200057

OPTIONS

Auxiliary circuit



200048



200801



BATTERY MASTER SWITCH - MANUAL CONTROL

SINGLE POLE

S20 SERIES

PRODUCT SELECTION

P/N	PROTECTION DEGREE	FINISH	HANDLE		HOMOLOGATION	POLARITY	TERMINALS		AUXILIARY CIRCUIT		OPTION
			TYPE	COLOR AND MATERIAL			LENGTH	MATERIAL	TYPE	TERMINALS SIZE	
200021	IP54	Metallic	Fixed / 2 positions	Red thermoplastic	-	+ CUT-OFF	4 mm	Copper	Normally open	6.35 PIN	-
200023	IP65	Metallic	Fixed / 2 positions	Black thermoplastic	ISO 8846	GND CUT-OFF	4 mm	Copper	-	-	-
200048	IP65	White	Fixed / 2 positions	Red thermoplastic	ISO 8846 / ISO 10133	+ CUT-OFF	4 mm	Copper	-	-	-
200049	IP65	White	Fixed / 2 positions	Black thermoplastic	ISO 8846	GND CUT-OFF	4 mm	Copper	-	-	-
200057	IP40	Metallic	Fixed / 2 positions	Metallic	-	GND or + CUT-OFF	4 mm	Copper	Changeover switch	6.35 PIN	-
200060	IP67	Metallic	Fixed / 2 positions	Metallic	ISO 8846 / ISO 10133	GND or + CUT-OFF	4 mm	Copper	-	-	-
200061	IP67	Metallic	Removable in OFF position	Metallic	ISO 8846 / ISO 10133	GND or + CUT-OFF	4 mm	Copper	-	-	-
200801	IP67	Metallic	Removable in OFF position	Metallic	ISO 8846 / ISO 10133	GND or + CUT-OFF	4 mm	Copper	-	-	Red protection cap
201363	IP65	Metallic	Fixed / 2 positions	Red thermoplastic	ISO 8846 / ISO 10133	+ CUT-OFF	4 mm	Copper	-	-	-
201540	IP65	Metallic	Fixed / 2 positions	Red thermoplastic	ISO 8846 / ISO 10133	+ CUT-OFF	13 mm	Copper	-	-	-
201543	IP65	Metallic	Fixed / 2 positions	Black thermoplastic	ISO 8846	GND CUT-OFF	13 mm	Copper	-	-	-
202740	IP67	Metallic	Removable in OFF position	Metallic	ISO 8846 / ISO 10133	GND or + CUT-OFF	13 mm	Copper	-	-	-
203185	IP67	Metallic	Removable in OFF position	Metallic	ISO 8846 / ISO 10133	GND or + CUT-OFF	4 mm	Copper	-	-	Black protection cap

On request: specific technical demand can be studied

ACCESSORIES (see «Spare parts» section)

HANDLE

901 SERIES
For P/N 200061 - 200801 - 202740

200700

901 SERIES
For P/N 203185

203186

TERMINAL INSULATION CAP

900 SERIES
Red

201010

900 SERIES
Black

202499

TERMINAL HEIGHTENED

900 SERIES

200588

S30 SERIES



GLOBAL PRODUCT



GENERAL CHARACTERISTICS

IP68 IPX9K	+85°C -40°C	PA66 glass filled	190g	M10
----------------------	----------------	-----------------------------	-------------	------------

- Continuous rating 275 A
- Overload 1250 A (10 s)
- Ground or positive Cut-off

PRODUCT SELECTION

P/N	FINISH	HANDLE		HOMOLOGATION	TERMINALS	
		TYPE	COLOR AND MATERIAL		LENGTH	MATERIAL
203250	Yellow	Removable in 3rd position «Padlock»	Red thermoplastic	ISO 8846 / ISO 10133	8,5 mm	Tin-plated copper
203253	Black	Removable in 3rd position «Padlock»	Yellow thermoplastic	ISO 8846	8,5 mm	Tin-plated copper
203260	White	Removable in 3rd position «Padlock»	Red thermoplastic	ISO 8846 / ISO 10133	8,5 mm	Tin-plated copper
203380	Black	Removable in 3rd position «Padlock»	Red thermoplastic	ISO 8846 / ISO 10133	8,5 mm	Tin-plated copper

On request: specific technical demand can be studied

ACCESSORIES (see «Spare parts» section)

HANDLE	TERMINAL INSULATION CAP
901 SERIES Red 203085	900 SERIES Red 201010
901 SERIES Yellow 203252	900 SERIES Black 202499
TERMINAL HEIGHTENED	INSULATION PLATE
900 SERIES 200588	900 SERIES Yellow 203249
	900 SERIES White 203259
	900 SERIES Black 203088

S50 SERIES



GLOBAL PRODUCT



GENERAL CHARACTERISTICS

IP68
+85°C / -40°C
PBT or Zinc alloy
500g
M10

Continuous rating 300 A

Overload 3000 A (5 s)

Ground or positive Cut-off

VERSIONS

FIXED or REMOVABLE HANDLE

PRODUCT SELECTION

P/N	FINISH	HANDLE		TERMINALS		POWER DROP	OPTION
		TYPE	COLOR AND MATERIAL	LENGTH	MATERIAL		
200027	Metallic	Removable in OFF position	Metallic	16 mm	Copper	50 mV max at 300 A	-
200028	Metallic	Removable in OFF position	Metallic	16 mm	Copper	50 mV max at 300 A	Chain
201900	Metallic	Removable in OFF position	Metallic	16 mm	Copper	50 mV max at 300 A	Chain + red protection cap
202500	Metallic	Removable in OFF position	Red metallic	16 mm	Copper	50 mV max at 300 A	Chain
203115	Black	Fixed / 2 positions	Yellow thermoplastic	16 mm	Copper	-	-
203228	Black	Fixed / 2 positions	Yellow thermoplastic	16 mm	Silver plated copper	-	-
203235	Black	Fixed / 2 positions	Red thermoplastic	16 mm	Tin-plated copper	-	-

On request: specific technical demand can be studied

ACCESSORIES (see «Spare parts» section)

HANDLE

901 SERIES For P/N 200027 **200993**

901 SERIES For P/N 200028 - 201900 **202633**

901 SERIES For P/N 202500 **202841**

TERMINAL HEIGHTENED

900 SERIES **200588**

TERMINAL INSULATION CAP

900 SERIES Red **201010**

900 SERIES Black **202499**

S100 SERIES



GLOBAL PRODUCT



GENERAL CHARACTERISTICS

IP66

+85 °C
-40 °C

Zinc alloy

until 650 g

M10

Continuous rating until 300 A

Overload 2500 A (5 s)

VERSIONS

GROUND CUT-OFF or POSITIVE CUT-OFF

FIXED or REMOVABLE HANDLE



200008



OPTIONS

Auxiliary circuit



200033



200010



BATTERY MASTER SWITCH - MANUAL CONTROL

SINGLE POLE

S100 SERIES

PRODUCT SELECTION

P/N	CONTINUOUS RATING	FINISH	HANDLE		POLARITY	TERMINALS		AUXILIARY CIRCUIT			OPTION
			TYPE	COLOR AND MATERIAL		LENGTH	MATERIAL	TYPE	CONTINUOUS RATING	CONNECTION	
200000	250 A	Metallic	Fixed / 2 positions	Red thermoplastic	GND or + CUT-OFF	20 mm	Copper	Normally open	10 A	1 x 6.35 + shunt	
200001	250 A	Metallic	Fixed / 2 positions	Red thermoplastic	GND CUT-OFF	7 mm	Copper	D+	10 A	1 M6 + shunt	
200004	250 A	Metallic	Removable in OFF position	Red thermoplastic	GND or + CUT-OFF	7 mm	Copper	D+	10 A	1 M6 + shunt	
200006	250 A	Metallic	Fixed / 2 positions	Red thermoplastic	GND or + CUT-OFF	20 mm	Copper	Normally open	10 A	2 x 6.35	
200007	250 A	Metallic	Fixed / 2 positions	Red thermoplastic	GND or + CUT-OFF	21 mm	Copper	Normally open	10 A	1 x 6.35 + shunt	Protection flap
200008	250 A	Metallic	Fixed / 2 positions	Red thermoplastic	GND or + CUT-OFF	10 mm	Copper	-	-	-	
200010	250 A	Black	Fixed / 2 positions	Red thermoplastic	GND CUT-OFF	10 mm	Copper	-	-	-	
200011	250 A	Metallic	Removable in OFF position	Red thermoplastic	GND or + CUT-OFF	10 mm	Copper	-	-	-	
200012	250 A	Metallic	Fixed / 2 positions	Red thermoplastic	GND or + CUT-OFF	13 mm	Copper	-	-	-	Protection flap
200031	250 A	Metallic	Fixed / 2 positions	Red thermoplastic	GND or + CUT-OFF	13 mm	Copper	Normally open	10 A	1 x 6.35 + shunt	
200032	250 A	Metallic	Fixed / 2 positions	Red thermoplastic	GND or + CUT-OFF	8 mm	Copper	Normally open	10 A	2 x 6.35	Rubber protection
200033	250 A	Metallic	Fixed / 2 positions	Red thermoplastic	GND or + CUT-OFF	13 mm	Copper	-	-	-	
200043	250 A	Metallic	Fixed / 2 positions	Red metallic	GND or + CUT-OFF	10 mm	Copper	-	-	-	
201437	250 A	Metallic	Fixed / 2 positions	Red thermoplastic	GND or + CUT-OFF	20 mm	Copper	D+	10 A	2 x 6.35	Rubber protection
202574	250 A	Metallic	Fixed / 2 positions	Red thermoplastic	GND or + CUT-OFF	10 mm	Copper	-	-	-	Rubber protection
203173	300 A	Yellow	Fixed / 2 positions and lockable in OFF position	Red thermoplastic	GND or + CUT-OFF	21 mm	Silver plated copper	-	-	-	Lockable in OFF position
203174	250 A	Yellow	Fixed / 2 positions and lockable in OFF position	Red thermoplastic	GND or + CUT-OFF	21 mm	Copper	-	-	-	Lockable in OFF position
203238	250 A	Black	Fixed / 2 positions and lockable in OFF position	Red thermoplastic	GND or + CUT-OFF	21 mm	Copper	Normally open	10 A	2 x 6.35	Lockable in OFF position
203240	250 A	Black	Fixed / 2 positions and lockable in OFF position	Red thermoplastic	GND or + CUT-OFF	21 mm	Copper	-	-	-	Lockable in OFF position

On request: specific technical demand can be studied

ACCESSORIES (see «Spare parts» section)

HANDLE	TERMINAL INSULATION CAP
901 SERIES For P/N 200004 - 200011	200929
	900 SERIES Red
	201010
	900 SERIES Black
	202499
	TERMINAL HEIGHTENED
	900 SERIES
	200588

BATTERY SWITCH
ELECTRICAL CONTROL

BATTERY SWITCH
MANUAL CONTROL

POWER RELAY

SWITCH AND BUTTON

ACCESSORIES AND
SPARE PARTS

CONCRETO



POWER RELAY NORMALLY OPEN

S500 SERIES



GLOBAL PRODUCT



GENERAL CHARACTERISTICS

IP65

+80°C
-30°C

Steel

550g

M8

Continuous rating 100 A

Overload until 600 A (5 s)

Ground or positive Cut-off

VERSIONS

12 V or 24 V

0.4 A to 0.7 A current consumption

OPTIONS

Secondary control

PRODUCT SELECTION

P/N	SECONDARY CONTROL	VOLT	FINISH	OVERLOAD	TERMINALS		CONTROL CIRCUIT CONNECTION	CURRENT CONSUMPTION	TEMPORARY USE (4h max)
					LENGTH	MATERIAL			
201470	-	24 V	Black	500 A (5 s)	6 mm	Copper	2 x M5 studs	0.6 A	130 A
201480	-	12 V	Black	500 A (5 s)	6 mm	Copper	2 x M5 studs	0.5 A	150 A
201570	Manual control	24 V	Black	500 A (5 s)	6 mm	Copper	2 x M5 studs	0.5 A	150 A
201640	-	12 V	Black	600 A (5 s)	6 mm	Copper	2 x M5 studs	0.7 A	Permanent use
201660	-	24 V	Black	600 A (5 s)	6 mm	Copper	2 x M5 studs	0.4 A	Permanent use
202540	-	24 V	Black	600 A (5 s)	6 mm	Copper	2 x M5 studs	0.4 A	Permanent use

On request: specific technical demand can be studied

SWITCH AND BUTTON PUSH BUTTONS AND SWITCHES



SWITCH AND BUTTON
PUSH BUTTON

S700 SERIES



GLOBAL PRODUCT



GENERAL CHARACTERISTICS

IP65

+85 °C
-40 °C

PA6
Glass reinforced

40g

Continuous rating 7 A

Overload until 25 A (10 s)

To use with:

S250 202301 - 202316 - 202317 - 202595 - 202597 - 202637
202639

PRODUCT SELECTION

P/N	NUMBER OF POLES	FINISH	AUXILIARY CIRCUIT
202170	Single pole	Red & Black	Normally open

On request: specific technical demand can be studied

ACCESSORIES (see «Spare parts» section)

CABLING KIT

S713 SERIES
4-Pin DIN connector

202326



SWITCH AND BUTTON ROTARY SWITCH

S701 SERIES



GLOBAL PRODUCT



GENERAL CHARACTERISTICS

IP65
IPX9K

+80 °C
-40 °C

PA6
Glass reinforced

100g

Continuous rating 5 A

202556 To use with:

S260 202710 - 202712

250254 To use with:

S200 200358 - 200359 - 200439 - 200686 - 200735 - 200819
200820 - 200822 - 200824 - 201217 - 201245 - 201484
201497 - 201766 - 201926 - 202072 - 202136 - 202159

S220 203105 - 203106 - 203254 - 203255

S250 202310 - 202311 - 202319 - 202636 - 202664 - 202665
202698 - 202800 - 202976 - 203035

PRODUCT SELECTION

P/N	TYPE	FINISH	NUMBER OF POLES	ACCESSORIES	TERMINALS	CONNECTION
202556	Normally open	Red and black	Double pole	Yellow plate	Tin-plated copper	ISO 15170 / DIN 72585
202590	Inverser	Red and black	Double pole	Yellow plate	Tin-plated copper	ISO 15170 / DIN 72585
250254	Normally open	Red and black	Single pole	Yellow plate	Tin-plated copper	ISO 15170 / DIN 72585

On request: specific technical demand can be studied

ACCESSORIES (see «Spare parts» section)

CABLING KIT

S713 SERIES
4-Pin DIN connector

202326

BATTERY SWITCH
ELECTRICAL CONTROL

BATTERY SWITCH
MANUAL CONTROL

POWER RELAY

SWITCH AND BUTTON

ACCESSORIES AND
SPARE PARTS

S702 SERIES



GLOBAL PRODUCT



GENERAL CHARACTERISTICS

IP66

+85 °C
-30 °C

PP0
Glass reinforced

150g

M8

Continuous rating 150 A

Overload until 500 A (10 s)

To use with:

S200 200358 - 200359 - 200439 - 200686 - 200735 - 200819
200820 - 200822 - 200824 - 201217 - 201245 - 201484
201497 - 201766 - 201926 - 202072 - 202136 - 202159

PRODUCT SELECTION

P/N	MARKING	FINISH	NUMBER OF POLES	ACCESSORIES
201601	French	Red and black	Single pole	Yellow plate
201859	English	Red and Black	Single pole	Yellow plate

On request: specific technical demand can be studied

ACCESSORIES AND SPARE PARTS

HANDLES AND ACCESSORIES	34
CONNECTION	41

ACCESSORIES AND SPARE PARTS
HANDLES AND ACCESSORIES

901 SERIES



HANDLE 200392

COLOR	MATERIAL
Red	Thermoplastic

To use with:

S190 200913



HANDLE 200700

COLOR	MATERIAL
Metallic	Zinc alloy

To use with:

S20 200061 - 200801 - 202740



HANDLE 200929

COLOR	MATERIAL
Red	Thermoplastic

To use with:

S100 200004 - 200011 - 201148

ACCESSORIES AND SPARE PARTS
HANDLES AND ACCESSORIES

901 SERIES



HANDLE 200993

COLOR	MATERIAL
Metallic	Zinc alloy

To use with:
S50 200027



HANDLE 201134

COLOR	MATERIAL
Red	Thermoplastic

To use with:
S190 201544



HANDLE 202474

COLOR	MATERIAL
Red	Thermoplastic

To use with:
S10 201767 - 201768 - 201831 - 202365 - 203201

BATTERY SWITCH
ELECTRICAL CONTROL

BATTERY SWITCH
MANUAL CONTROL

POWER RELAY

SWITCH AND BUTTON

ACCESSORIES AND
SPARE PARTS

ACCESSORIES AND SPARE PARTS
HANDLES AND ACCESSORIES

901 SERIES

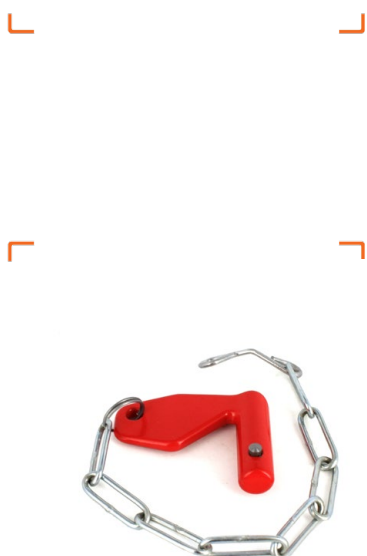


HANDLE (with chain) 202633

COLOR	MATERIAL
Metallic	Zinc alloy

To use with:

S50 200028 - 201900



HANDLE (with chain) 202841

COLOR	MATERIAL
Red	Zinc alloy

To use with:

S50 202500



HANDLE

P/N	COLOR	MATERIAL
203085	Red	Thermoplastic
203252	Yellow	Thermoplastic

To use with:

S30 203250 - 203253 - 203260 - 203380

901 SERIES



HANDLE (with rubber protection)

203186

COLOR	MATERIAL
Metallic	Zinc alloy

To use with:	
S50	200027 - 200028 - 201900 - 202500
S20	203185

ACCESSORIES AND SPARE PARTS
HANDLES AND ACCESSORIES

900 SERIES



PROTECTION CAP 200802

COLOR	MATERIAL
Red	PVC

To use with:	
S9	202373
S20	200061 - 200062 - 200801 - 202740 - 203185
S50	200027 - 200028 - 201900 - 202500



CHAIN 200894

COLOR	MATERIAL
Metallic	Steel

To use with:	
S10	201768 - 203201
S50	200028 - 201900 - 202500



RUBBER PROTECTION 201549

COLOR	MATERIAL
Black	PVC

To use with:	
S20	200061 - 200062 - 200801 - 202740 - 203185

ACCESSORIES AND SPARE PARTS

HANDLES AND ACCESSORIES

900 SERIES



PROTECTION CAPS 201898

COLOR	MATERIAL
Red	PVC

To use with:
S50 200027 - 200028 - 201900 - 202500



RUBBER PROTECTION 201899

COLOR	MATERIAL
Red	PVC

To use with:
S50 200027 - 200028 - 201900 - 202500



INSULATION PLATE

P/N	COLOR	MATERIAL
203088	Black	PA66
203249	Yellow	PA66
203259	White	PA66

To use with:
S30 203250 - 203253 - 203260 - 203380

ACCESSORIES AND SPARE PARTS

HANDLES AND ACCESSORIES

900 SERIES



PROTECTION CAP 203243

COLOR	MATERIAL
Red	PVC

To use with:
S20 200061 - 200062 - 200801 - 202740 - 203185



RUBBER PROTECTION 500123

COLOR	MATERIAL
Red	PVC

To use with:
S20 200061 - 200062 - 200801 - 202740 - 203185

713 SERIES



CABLING KIT

202326

4-Pin DIN connector

To use with:

S700 202170

S701 202590 - 250254

S250 202323



CABLING KIT

250025

4-Pin Superseal connector

To use with:

S220 203105 - 203106 - 203254 - 203255



CABLING KIT

250333

4-Pin DIN connector

To use with:

S250 202319 - 202636



713 SERIES



CABLING KIT 250350

5-Pin Superseal connector

To use with:

S250 202323



CABLING KIT 250351

2-Pin Superseal connector

To use with:

S250 203035 - 202976



CABLING KIT 250352

7-Pin DIN connector

To use with:

S250 202595 - 202597 - 202637 - 202639

S260 202710 - 202712

900 SERIES



TERMINALS HEIGHTENED

200588

COLOR	MATERIAL
Metallic	Brass

To use with:

M10 terminals



TERMINALS INSULATION CAP

P/N	COLOR	MATERIAL
201010	Red	PVC
202499	Black	PVC

To use with:

M10 terminals



BUSBAR

203213

TERMINALS SIZE	COLOR	MATERIAL
M8 x 3 (washers and nuts included)	Metallic	Tinned copper

To use with:

S220





viatemis.com



YOUR EMBEDDED MECHATRONIC SOLUTIONS



125 Route de Paris . 03410 SAINT VICTOR . France
Tél +33(0)4 70 09 70 00 . Fax +33(0)4 70 09 70 09

SAS au capital de 200 000€ . APE 4690 Z
Siret 539 472 001 00012 . TVA FR 18 539 472 001

www.batterymasterswitch.com



125 route de Paris
03410 SAINT-VICTOR - France
Tel : +33(0)4 70 08 26 00
Tel : +33(0)4 70 08 26 20
contact@viatemis.com